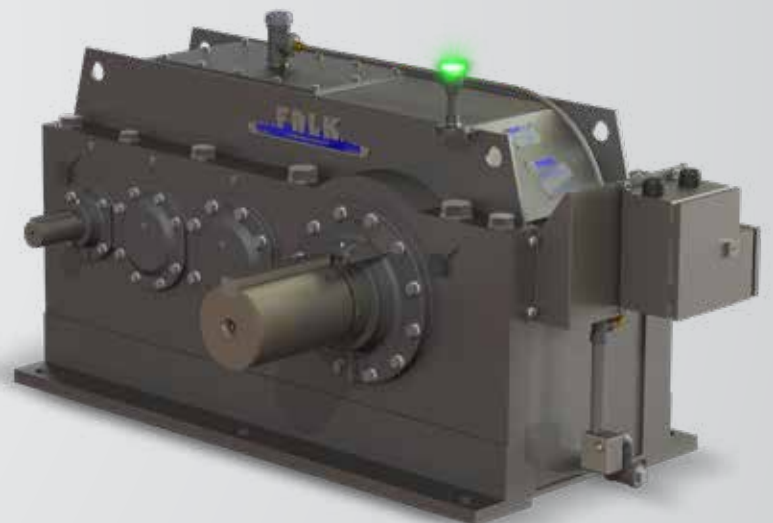




# Smart Condition Monitoring System for A-Plus and Y-Series Gear Drives





The Smart Condition Monitoring System measures, records, trends, and displays drive operating conditions and alerts specified users of abnormal operating conditions. Our proprietary algorithms continuously compare both individual and aggregated sensor data against embedded models of healthy drive operating conditions. When an emerging or actual abnormal condition is detected, contextual information about the condition is simultaneously sent to users via e-mail, the smart condition monitoring system cloud-based software portal and/or your supervisory control software, if connected to a control system.

## List of Capabilities:

Drive Temperature of key components including:

- Ambient temperature
- Oil sump temperature

Vibration at key locations:

- Measures vibration and identifies key potential sources of abnormal operation

Oil Quality:

- Estimated Oil life remaining in % / hours at low life remaining
- Oil water content (relative humidity)
- Critically low oil level (subject to drain port availability)

Connected Motor current draw

Output shaft speed

## Communication Channels:

EtherNet/IP™, Modbus TCP, PROFINET® to PLC / DCS

Rexnord Connect Portal via LTE or Ethernet

E-mailed Alerts

Local Stack light – Normal/Abnormal/Severe Alert

## Environmental Specifications:

IP66

## Available for A-Plus and Y-Series Gear Drives

### The Smart Condition Monitoring System Includes:

- 1-year Rexnord Connect Portal subscription for data access and analytics (required for system operation)
  - 3-year subscription package also available at time of purchase
- Professional, factory certified installation of sensors, stack light, and edge device at a Rexnord Industrial Services facility (oil change or other required services not included). Lead time depends on overall scope of work and shipping time.
- OR, factory certified installation at your facility in North America
  - Installed in 8 hours or less
  - Some customer field preparation may be required; oil change or other required services not included
  - On-Site verification of Smart Condition Monitoring System performance
  - Two-week typical lead time

# Rexnord Connect Portal for Data Access and Analytics



## The Subscription\* Includes:

1. Enable factory-set alerts for key drive health parameters
2. Access to key drive health data through all channels:
  - Stack light
  - E-mailed alerts
  - PLC / DCS interface
  - Rexnord Connect Portal
3. Data history and trendlines stored in a secure cloud server
4. Updates to:
  - Functionality / Capability (through downloaded firmware updates)
  - Security software
  - Drive health algorithms
5. Access to Rexnord product experts for understanding drive health messaging



Rexnord Connect Portal

\* Subscription is billed and renewed annually. Subscription must be activated within a year of delivery.

# Supported Units

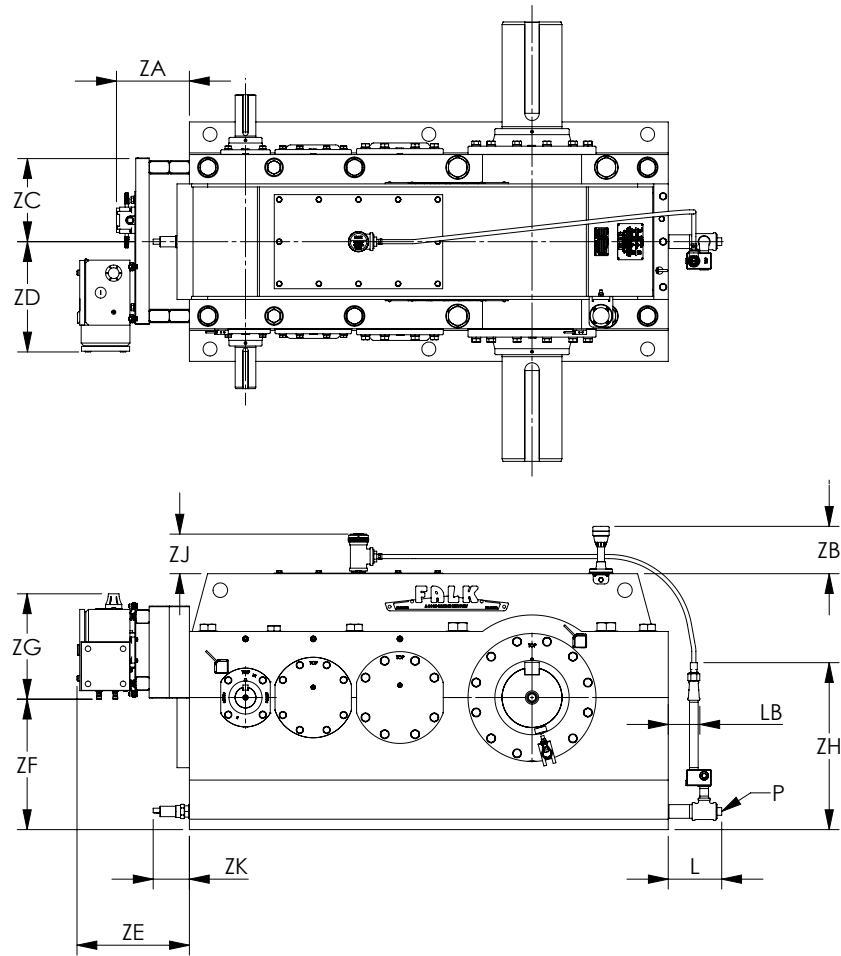
---

To ensure that your A-Plus and Y-Series Gear Drive is compatible with the Smart Condition Monitoring System, please refer to the list below. **If your A-Plus or Y-Series Gear Drive is not on the list below, please contact Rexnord for possible engineered-to-order options.**

- Unit Types — Parallel Shaft Units (A, AM, and Y) and Right-Angle Units (AB, ABM, and YB)
- Mounting Position — Foot Mount, Horizontal without bridge or kiln slope
- Unit Sizes — 385A, 405A, 425A, 445A, 465A, 485A, 505A, 2050Y, 2060Y, 2070Y, 2080Y, 2090Y, 2100Y, 2110Y, 2120Y
- Low Speed Shaft Type — Solid LSS
- Number of Reductions
  - For Parallel Shaft, Type A and Type Y – Single, Double, and Triple
  - For Right-Angle, Type AB – Double, Triple, and Quadruple
  - For Right-Angle, Type YB – Double and Triple
- Accessories — Electric Fans, Shaft Fans, Cooling Tubes, Backstops
- Current Transducer — Any motor with less than 660V AC and drawing less than 600A



# Type A Gear Drives



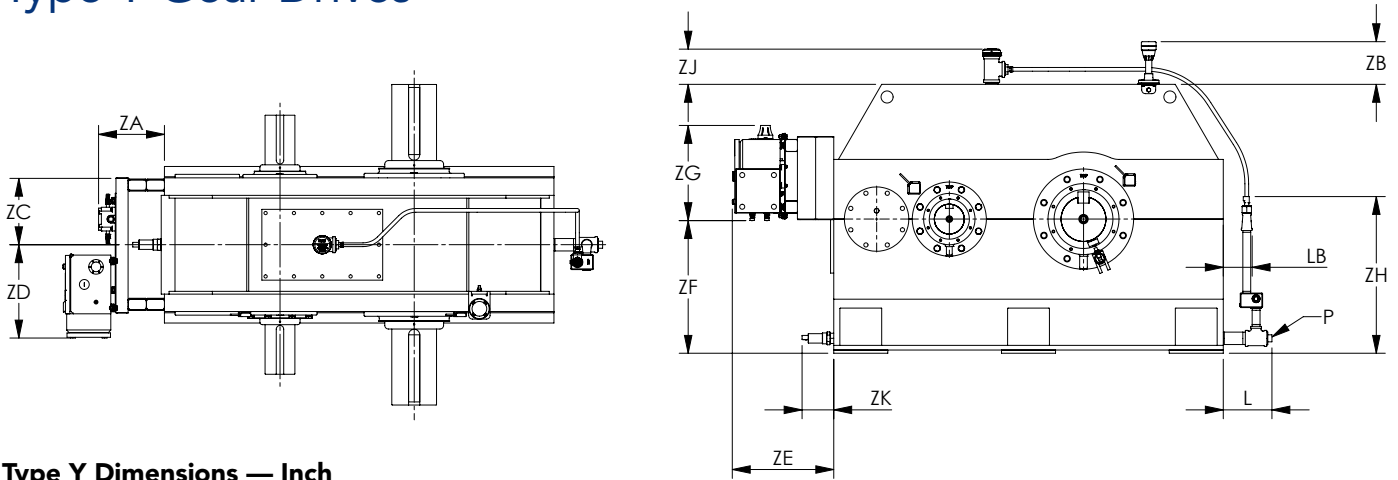
## Type A Dimensions — Inch

Drive Size	ZA <sup>①</sup>	ZB <sup>①</sup>	ZC <sup>①</sup>	ZD <sup>①</sup>	ZE <sup>①</sup>	ZF <sup>①</sup>	ZG <sup>①</sup>	ZH <sup>①②</sup>	ZJ <sup>①②</sup>	ZK <sup>①</sup>	L <sup>①②</sup>	LB <sup>①②</sup>	P <sup>①②</sup>
<b>385A1</b>	8.83	5.73	8.76	11.61	13.61	9.62	12.76	20.13	4.79	7.73	6.48	3.69	1.25-11.5 NPT
<b>385A2, 385A3</b>	8.83	5.73	9.14	10.36	13.61	9.62	12.76	20.13	4.79	6.87	6.48	3.69	1.25-11.5 NPT
<b>405A1</b>	8.83	5.73	9.14	12.36	13.61	10.94	12.76	20.02	4.79	7.77	6.48	3.69	1.25-11.5 NPT
<b>405A2, 405A3</b>	8.83	5.73	8.14	11.36	13.61	10.94	12.76	20.02	4.79	6.83	6.48	3.69	1.25-11.5 NPT
<b>425A1</b>	8.83	5.73	9.64	12.61	13.61	12.32	12.76	20.02	4.79	8.39	6.48	3.69	1.25-11.5 NPT
<b>425A2, 425A3</b>	8.83	5.73	8.76	11.61	13.61	12.32	12.76	20.02	4.79	6.89	6.48	3.69	1.25-11.5 NPT
<b>445A1</b>	8.83	5.73	11.58	14.67	13.61	14.32	12.76	20.16	4.79	8.53	6.48	3.69	1.25-11.5 NPT
<b>445A2, 445A3</b>	8.83	5.73	9.14	12.36	13.61	14.32	12.76	20.16	4.79	6.89	6.48	3.69	1.25-11.5 NPT
<b>465A1</b>	8.83	5.73	11.39	14.61	13.61	15.82	12.76	20.22	4.79	8.13	6.48	3.69	1.25-11.5 NPT
<b>465A2, 465A3</b>	8.83	5.73	10.14	13.36	13.61	15.82	12.76	20.22	4.79	6.89	6.48	3.69	1.25-11.5 NPT
<b>485A1</b>	8.83	5.73	11.64	14.36	13.61	17.82	12.76	20.46	4.79	7.63	6.34	3.55	1.25-11.5 NPT
<b>485A2, 485A3</b>	8.83	5.73	10.51	13.61	13.61	17.82	12.76	20.46	4.79	6.76	6.35	3.56	1.25-11.5 NPT
<b>505A1</b>	8.83	5.73	12.51	15.36	13.61	19.57	12.76	20.71	4.79	7.63	6.35	3.56	1.25-11.5 NPT
<b>505A2, 505A3</b>	8.83	5.73	12.51	15.36	13.61	19.57	12.76	20.71	4.79	6.76	6.35	3.56	1.25-11.5 NPT

① Edge device, oil quality sensor, critical loss of oil sensor, and Andon light may be mounted on either end of the gearbox. Dimensions from reference surfaces apply to either mounting location.

② Critical loss of oil sensor is available only when second oil drain hole is available for installation.

# Type Y Gear Drives



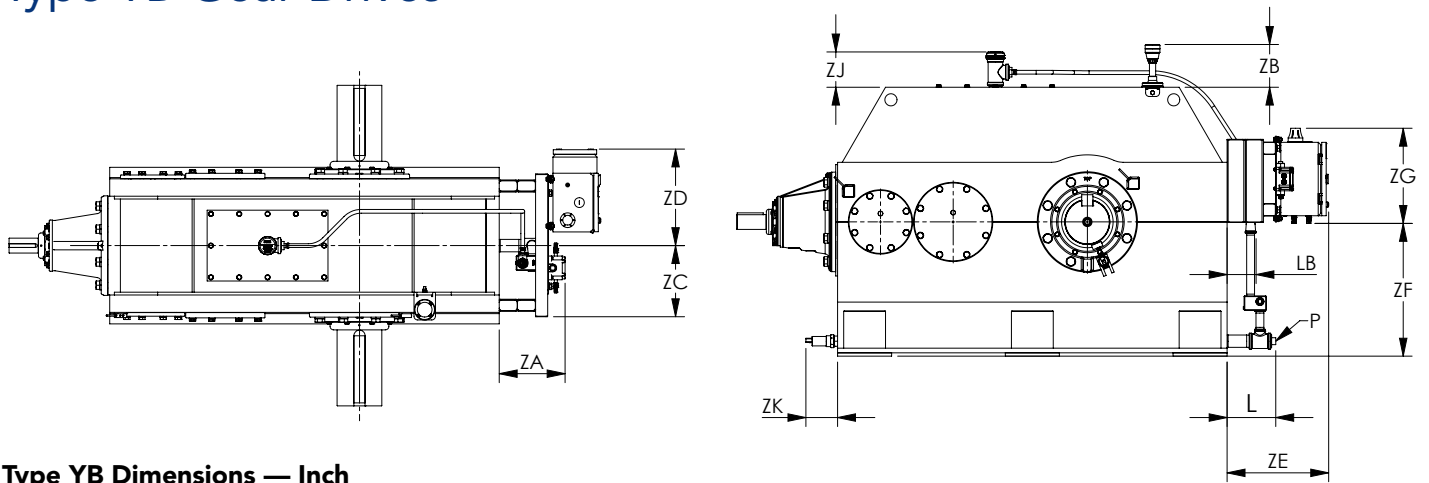
**Type Y Dimensions — Inch**

Drive Size	ZA <sup>①</sup>	ZB <sup>①</sup>	ZC <sup>①</sup>	ZD <sup>①</sup>	ZE <sup>①</sup>	ZF <sup>①</sup>	ZG <sup>①</sup>	ZH <sup>②</sup>	ZJ <sup>②</sup>	ZK <sup>②</sup>	L <sup>②</sup>	LB <sup>②</sup>	P <sup>②</sup>
2050Y	8.83	5.73	10.98	8.51	13.61	7.80	12.76	15.07	4.58	6.84	6.26	3.47	1.00-11.5 NPT
2060Y	8.83	5.73	9.89	9.61	13.61	8.80	12.76	15.07	4.58	6.84	6.26	3.47	1.00-11.5 NPT
2070Y	8.83	5.73	9.61	9.89	13.61	10.05	12.76	15.20	4.58	6.84	6.26	3.47	1.00-11.5 NPT
2080Y	8.83	5.73	8.89	10.61	13.61	11.30	12.76	19.71	4.71	6.82	6.41	3.62	1.25-11.5 NPT
2090Y	8.83	5.73	8.61	10.89	13.61	12.80	12.76	19.90	4.71	6.82	6.53	3.74	1.25-11.5 NPT
2100Y	8.83	5.73	8.48	11.89	13.61	14.30	12.76	19.90	4.71	6.82	6.53	3.74	1.25-11.5 NPT
2110Y	8.83	5.73	8.48	11.89	13.61	16.05	12.76	20.02	4.71	6.76	6.53	3.74	1.25-11.5 NPT
2120Y	8.83	5.73	8.89	12.61	13.61	17.80	12.76	20.02	4.70	6.76	6.53	3.74	1.25-11.5 NPT

① Edge device, oil quality sensor, critical loss of oil sensor, and Andon light may be mounted on either end of the gearbox. Dimensions from reference surfaces apply to either mounting location.

② Critical loss of oil sensor is available only when second oil drain hole is available for installation.

# Type YB Gear Drives



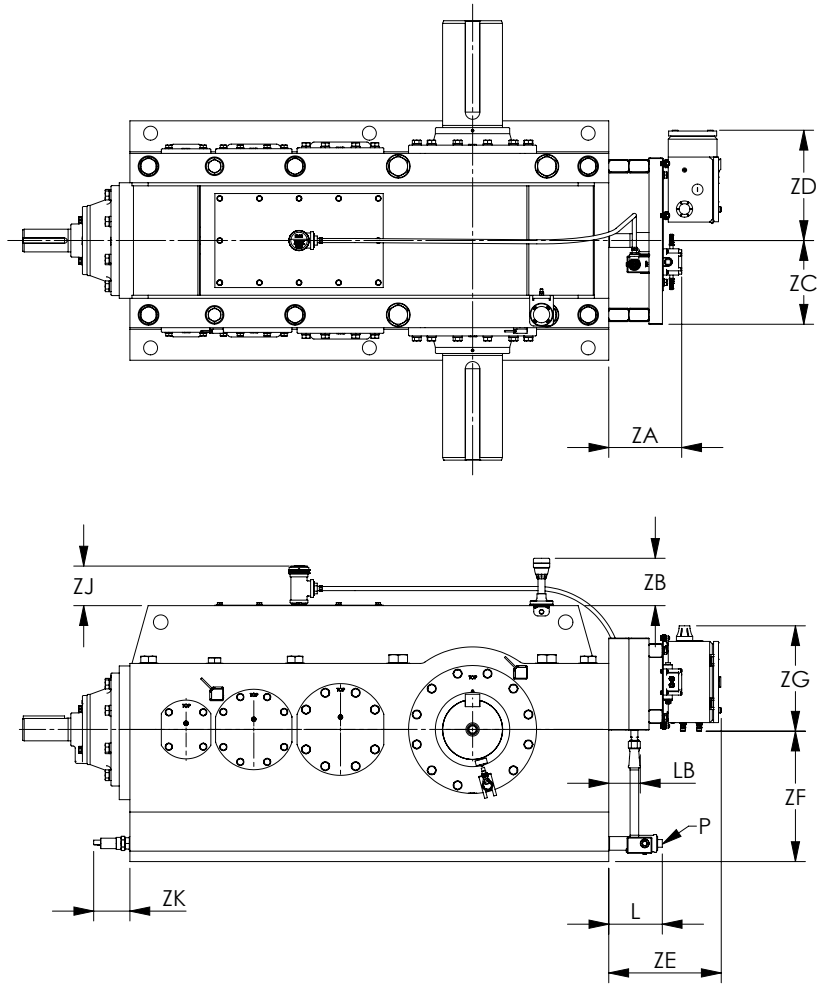
**Type YB Dimensions — Inch**

Drive Size	ZA	ZB <sup>①</sup>	ZC	ZD	ZE	ZF	ZG	ZJ <sup>②</sup>	ZK <sup>①</sup>	L <sup>②</sup>	LB <sup>②</sup>	P <sup>②</sup>
2050YB	8.83	5.73	10.98	8.51	13.61	7.80	12.76	4.58	6.84	6.26	3.47	1.00-11.5 NPT
2060YB	8.83	5.73	9.89	9.61	13.61	8.80	12.76	4.58	6.84	6.26	3.47	1.00-11.5 NPT
2070YB	8.83	5.73	9.61	9.89	13.61	10.05	12.76	4.58	6.84	6.26	3.47	1.00-11.5 NPT
2080YB	8.83	5.73	8.89	10.61	13.61	11.30	12.76	4.71	6.82	6.41	3.62	1.25-11.5 NPT
2090YB	8.83	5.73	8.61	10.89	13.61	12.80	12.76	4.71	6.82	6.53	3.74	1.25-11.5 NPT
2100YB	8.83	5.73	8.48	11.89	13.61	14.30	12.76	4.71	6.82	6.53	3.74	1.25-11.5 NPT
2110YB	8.83	5.73	8.48	11.89	13.61	16.05	12.76	4.71	6.76	6.53	3.74	1.25-11.5 NPT
2120YB	8.83	5.73	8.89	12.61	13.61	17.80	12.76	4.70	6.76	6.53	3.74	1.25-11.5 NPT

① Oil quality sensor, and Andon light may be mounted on either end of the gearbox. Dimensions from reference surfaces apply to either mounting location.

② Critical loss of oil sensor is available only when second oil drain hole is available for installation.

# Type AB Gear Drives



## Type AB Dimensions — Inch

Drive Size	ZA	ZB <sup>①</sup>	ZC	ZD	ZE	ZF	ZG	ZJ <sup>②</sup>	ZK <sup>①</sup>	L <sup>②</sup>	LB <sup>②</sup>	P <sup>②</sup>
<b>385AB2</b>	8.83	5.73	8.76	11.61	13.61	9.62	12.76	4.79	7.49	6.48	3.69	1.25-11.5 NPT
<b>385AB3, 385AB4</b>	8.83	5.73	9.14	10.36	13.61	9.62	12.76	4.79	6.87	6.48	3.69	1.25-11.5 NPT
<b>405AB2</b>	8.83	5.73	9.14	12.36	13.61	10.94	12.76	4.79	7.48	6.48	3.69	1.25-11.5 NPT
<b>405AB3, 405AB4</b>	8.83	5.73	8.14	11.36	13.61	10.94	12.76	4.79	6.83	6.48	3.69	1.25-11.5 NPT
<b>425AB2</b>	8.83	5.73	9.64	12.61	13.61	12.32	12.76	4.79	8.13	6.48	3.69	1.25-11.5 NPT
<b>425AB3, 425AB4</b>	8.83	5.73	8.76	11.61	13.61	12.32	12.76	4.79	6.89	6.48	3.69	1.25-11.5 NPT
<b>445AB2</b>	8.83	5.73	11.58	14.67	13.61	14.32	12.76	4.79	8.33	6.48	3.69	1.25-11.5 NPT
<b>445AB3, 445AB4</b>	8.83	5.73	9.14	12.36	13.61	14.32	12.76	4.79	6.89	6.48	3.69	1.25-11.5 NPT
<b>465AB2</b>	8.83	5.73	11.39	14.61	13.61	15.82	12.76	4.79	7.93	6.48	3.69	1.25-11.5 NPT
<b>465AB3, 465AB4</b>	8.83	5.73	10.14	13.36	13.61	15.82	12.76	4.79	6.89	6.48	3.69	1.25-11.5 NPT
<b>485AB2</b>	8.83	5.73	11.64	14.36	13.61	17.82	12.76	4.79	7.63	6.34	3.55	1.25-11.5 NPT
<b>485AB3, 485AB4</b>	8.83	5.73	10.51	13.61	13.61	17.82	12.76	4.79	6.76	6.35	3.56	1.25-11.5 NPT
<b>505AB2</b>	8.83	5.73	12.51	15.36	13.61	19.57	12.76	4.79	7.63	6.35	3.56	1.25-11.5 NPT
<b>505AB3, 505AB4</b>	8.83	5.73	12.51	15.36	13.61	19.57	12.76	4.79	6.76	6.35	3.56	1.25-11.5 NPT

① Oil quality sensor, and Andon light may be mounted on either end of the gearbox. Dimensions from reference surfaces apply to either mounting location.

② Critical loss of oil sensor is available only when second oil drain hole is available for installation.



866-REXNORD/866-739-6673 (Within the U.S.)  
414-643-2366 (Outside the U.S.)  
[www.rexnord.com](http://www.rexnord.com)

## Why Choose Rexnord?

When it comes to providing highly engineered products that improve productivity and efficiency for industrial applications worldwide, Rexnord is the most reliable in the industry. Commitment to customer satisfaction and superior value extend across every business function.

### Delivering Lowest Total Cost of Ownership

The highest quality products are designed to help prevent equipment downtime and increase productivity and dependable operation.

### Valuable Expertise

An extensive product offering is accompanied by global sales specialists, customer service and maintenance support teams, available anytime.

### Solutions to Enhance Ease of Doing Business

Commitment to operational excellence ensures the right products at the right place at the right time.