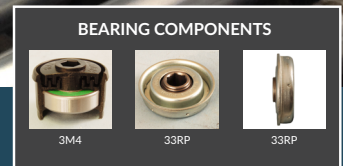




# PACKAGE HANDLING ROLLER SOLUTION

Ralphs-Pugh shafting is spring loaded at both ends for easy install and removal. This durable and custom solution maximizes efficiency while keeping safety and noise considerations top of mind. Take a few moments to review the benefits and strength of this leading package handling solution product.

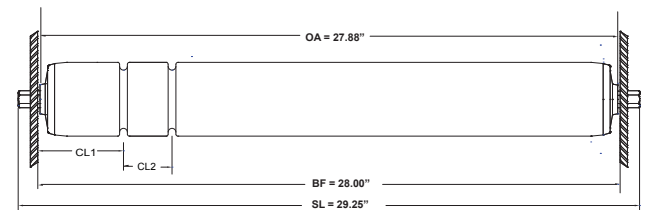


- Urethane adapter over a steel 5/16" hex carbon steel inner support shaft
- The urethane over the end of the shaft is 1/16" thick so the roller is always supported in the frame with steel not the urethane (shown in the picture above)
- The material is not only urethane, but conductive urethane to dispel any ideas about static charge buildup and that urethane characteristics are far superior to any other material with respect to wear, tear and abrasion resistance as well as assisting in noise reduction and frame less frame wear

\* Click the BDI Part # to order now!

BDI Part #	Ralphs Pugh Part #
<a href="#">21473218</a>	33RP.G46.UC62 X 16 1/2 BF SL 17.63
<a href="#">21473219</a>	33RP.G46.UC62 X 28 BF SL 29 1/4
<a href="#">21473220</a>	33RP.G46.UC62 X 30 BF SL 31 1/4
<a href="#">21473221</a>	33RP.G46.UC62 X 32 BF SL 33 1/4
<a href="#">21473222</a>	33RP.G46.UC62 X 34 BF SL 35 1/2
<a href="#">21473327</a>	3M4.G25.C14 X 25 1/2 BF SL 26.56
<a href="#">21473328</a>	3M4.G25.C14 X 27 1/2 BF SL 28.56
<a href="#">21520881</a>	3M3LLBLO.G25.C14 X 32 BF
<a href="#">21520982</a>	3RPLLBLO.G46.UC62 X 30 BF
<a href="#">21579024</a>	22G3.G13.C10 X 28 BF SL=29

The UC62 conductive urethane shaft adapters eliminate future conveyor frame wear and lower noise but do not repair existing frame damage. For existing frame damage, BDI offers sidewall repair kits.



33RP = ABEC-1 6002 CHROME ALLOY 30% PETROLIUM GREASE PACKED PRECISION BEARINGS WITH NON-CONTACT RUBBER SEALS IN A STAMPED ZINC PLATED METAL HOUSING.

G46G2 = 1.97" O.D. X .085" WALL THICKNESS GALVANIZED STEEL TUBE WITH (2) GROOVES

UC62 = 7/16" URETHANE SHAFT ADAPTER OVER AN INTERNAL 5/16" HEX CARBON STEEL SPRING-LOADED THROUGH SHAFT

BF = BETWEEN FRAME DIMENSION - OA WILL BE 1/8" LESS THAN BF

OA = OVER ALL DIMENSION FROM BEARING HUB TO BEARING HUB.

SL = SHAFT LENGTH

CL1 = \_\_\_\_\_" FROM FRAME TO CENTER OF 1ST GROOVE

CL2 = \_\_\_\_\_" FROM CENTER OF 1ST GROOVE TO CENTER OF 2ND GROOVE

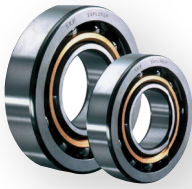
**BUY NOW**



BDIExpress.com



Turn to us to improve your uptime!



Bearings



Mechanical Power Transmission



Electrical



Motors & Drives



Sprockets & Chains



Hydraulic & Pneumatic



Material Handling



Chemicals



Linear Motion



O-Rings & Seals



Retaining & Locking Devices



Industrial & Safety

[BDIExpress.com](http://BDIExpress.com)