

**Continental**   
The Future in Motion



## **Retail Petroleum and Service Stations**

Premium Hose Solutions To  
Keep You On The Go



**Continental** 







Continental is a world leader in industrial rubber and plastic products and has the largest global footprint of any rubber products manufacturer. Our knowledge and expertise allow us to deliver the most innovative and highest quality products on the market. Plus, our extensive problem-solving experience across multiple industries and applications enables us to share innovations over our entire product offering. Which means we can deliver unexpected solutions and advanced improvements in situations where others can't. That's because we've been innovating the way the world moves for 150 years. And we'll continue to lead the way making the future better for everyone.



Continental offers a full breadth of industrial rubber products including:

- › Industrial Hose
- › Conveyor Belts
- › Power Transmission Belts
- › Hydraulic Hose and Fittings
- › Air Springs



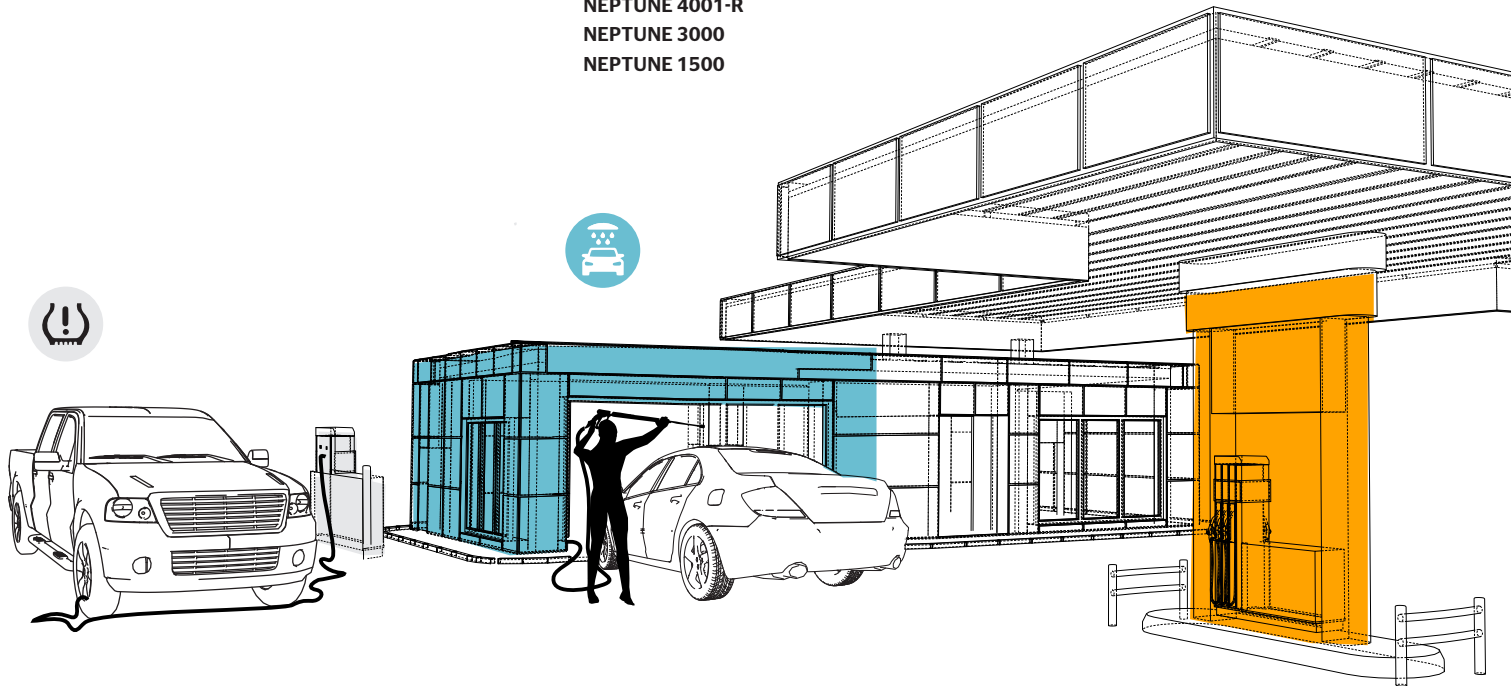
**NO MATTER WHAT YOU ARE DISPENSING, WE HAVE YOU COVERED.**

**SERVICE STATION AIR HOSES**

**FLEXSTEEL SERVICE STATION AIR  
SERVICE STATION AIR**

**CAR WASH HOSES**

**PLIOVIC PLUS 250  
PLIOVIC GS  
FRONTIER  
INSTA-GRIP 300  
VARIFLEX  
NEPTUNE 4001-R  
NEPTUNE 3000  
NEPTUNE 1500**



# Pushing the boundaries of what's possible.

We are the worldwide leader in the design and manufacture of technologically advanced hose for the oil and gas refinery industry. No matter what you're dispensing, our products meet or exceed the highest specifications, the strictest environmental mandates and perform in the most extreme conditions. And we will always push the boundaries of what's possible to bring you breakthroughs that incorporate the most advanced technology.

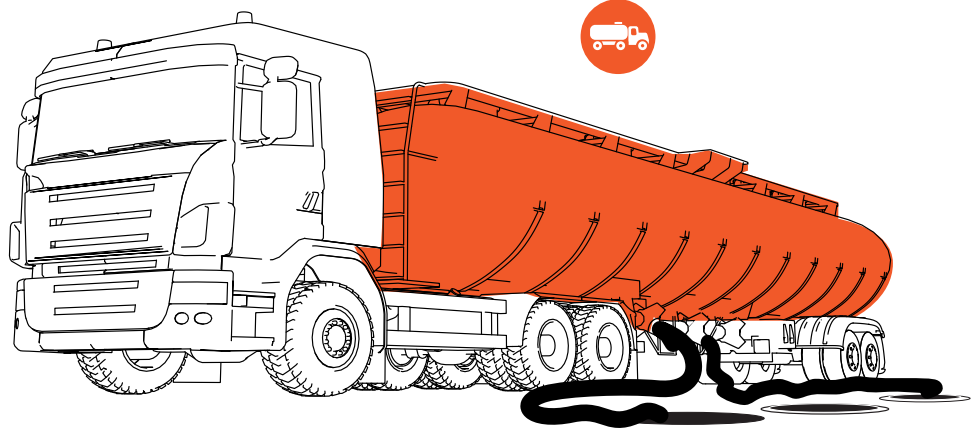
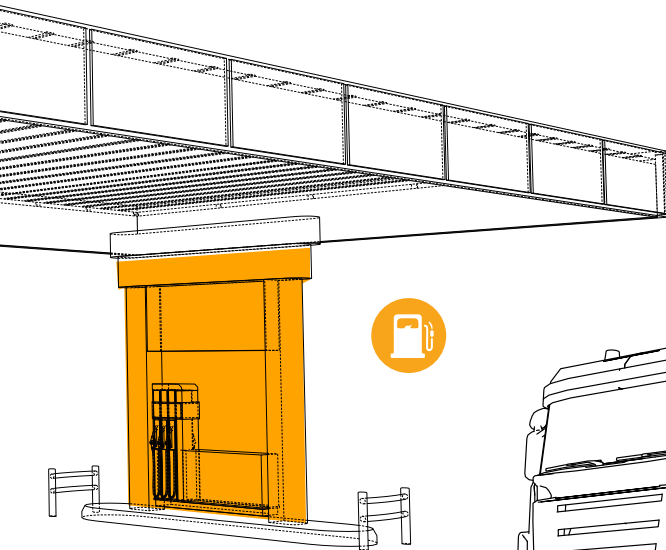
## DISPENSING HOSES

BC COLD FLEX  
 BC GASOLINE  
 BC MARINA  
 DEF DISPENSING  
 FLEXSTEEL FUTURA  
 FLEXSTEEL FUTURA B20  
 FLEXSTEEL FUTURA E25

FLEXSTEEL FUTURA ETHAN-ALL E85  
 FLEXSTEEL FUTURA HVR LOW PERM  
 FLEXSTEEL FUTURA LOW PERM  
 FLEXSTEEL FUTURA VAPOR ASSIST  
 LPG DELIVERY PRO  
 MAXXIM PREMIER ULTRA  
 PACER

## DROP HOSES

INFINITY  
 INFINITY HD  
 PALADIN  
 VELOCITY PETROLEUM



# Drop Hose



Drop Hose	Color	Hose ID	Temperature Range	Vacuum HG	Aromatic Content	B20	B50	B100	E15	E85	E100	Corrugated Cover	Light-weight
Infinity		2" - 4"	-40°F to 160°F	23 in.	60%	Tube & Cover	Tube & Cover	Tube & Cover	Tube & Cover	Tube & Cover	Tube & Cover	√	√
Infinity HD		2" - 4"	-40°F to 160°F	23 in.	60%	Tube & Cover	Tube & Cover	Tube & Cover	Tube & Cover	Tube & Cover	Tube & Cover	√	√
Paladin		2" - 4"	-40°F to 160°F	23 in.	60%	Tube & Cover	Tube & Cover	Tube & Cover	Tube & Cover	Tube & Cover	Tube & Cover	√	√
Velocity Petroleum		3" - 4"	-40°F to 140°F	29 in.	50%	Tube	Tube	Tube	Tube	Tube	Tube	√	√

## Additional Petroleum Transfer S&D Products

Flexwing Petroleum		1/2" - 6"	-35F to 200°F	29 in.	50%				Tube & Cover	Tube & Cover	Tube & Cover		
Extremeflex Petroleum		3/4" - 6"	-40°F to 200°F	29 in.	50%				Tube & Cover	Tube & Cover	Tube & Cover	√	√
Arctic Flexwing		1-1/4" - 4"	-65F to 180°F	29 in.	50%					Tube & Cover	Tube & Cover		
Arctic Extremeflex		2" - 4"	-65F to 180°F	29 in.	50%					Tube & Cover	Tube & Cover	√	√
Flexwing Versafuel		1" - 4"	-30°F to 180°F	29 in.	60%	Tube & Cover	Tube & Cover	Tube & Cover	Tube & Cover	Tube & Cover	Tube & Cover		
Versafuel Flex		1" - 4"	-30°F to 180°F	29 in.	60%	Tube & Cover	Tube & Cover	Tube & Cover	Tube & Cover	Tube & Cover	Tube & Cover	√	√
Spiraflex Polyurethane Vapor Recovery		2" - 4"	-30°F to 150°F	29 in.	50%	Tube & Cover	Tube & Cover	Tube & Cover		Tube & Cover	Tube & Cover	√	√



### Infinity™

The Infinity™ Fuel Drop Hose is constructed with the exclusive PVC double helix for superior flexibility, abrasion resistance and a low coefficient of friction for ease of maneuverability. Lightweight in construction, it is designed to transfer biodiesel and ethanol blends, gasoline and other petroleum products under pressure, gravity flow or medium suction (up to 23" Hg) at an ambient temperature and with an aromatic content of 60% or less.



### Paladin®

Paladin® is designed as a lightweight and flexible hose to transfer biodiesel and ethanol blends, gasoline and other petroleum products under pressure, gravity flow or medium suction (up to 23" Hg) at ambient temperature. Maximum aromatic content should not exceed 60%. Its outer PVC helix provides abrasion resistance and a low coefficient of friction.



### Infinity™ HD

This hose is constructed with the exclusive PVC double helix for superior flexibility, abrasion resistance and a low coefficient of friction for ease of maneuverability. Lightweight in construction, Infinity™ HD (Heavy Duty) is designed for higher working pressure applications (150 psi). It is suitable in gravity flow or medium suction at an ambient temperature. It is designed to transfer biodiesel and ethanol blends, gasoline and other petroleum products with an aromatic content of 60% or less.

### NEW



### Velocity™ Petroleum

This lightweight, easy-to-handle clear hose with a non-permeable TPU liner provides maximum fuel resistance when transferring gasoline, ethanol (up to E100), diesel, or biodiesel (up to B100 compliant with ASTM D5751). It can handle up to 50% aromatic content, stays flexible in cold temperatures (-40°F) and features static wire construction. Couple with banding coils for an air-tight crimp.





### Flexwing® Petroleum

Flexwing® Petroleum is for use in tank truck and in-plant operations to transfer gasoline, oil, ethanol blends and other petroleum-based products up to 50% aromatic content. It is designed for pressure, gravity flow or full-suction service. Newly redesigned for improved flexibility and a lighter weight construction for sizes up to and including 2½".



### ExtremeFlex™ Petroleum

This hose is an extremely flexible and lightweight drop hose for use in tank truck and in-plant operation to transfer diesel, ethanol, gasoline, oil and petroleum-based products with up to 50% aromatic content. It has a corrugated construction for lower drag coefficient and superior abrasion resistance.



### Arctic Flexwing®

Arctic Flexwing® is for use in low-temperature operations for transferring gasoline, oil and other petroleum products.



### Spiraflex® Polyurethane Vapor Recovery

This hose is for the recovery of gasoline vapors in tank truck loading at bulk terminals and in tank truck unloading at service stations.



### Arctic ExtremeFlex™

Arctic ExtremeFlex™ is an extremely flexible and lightweight drop hose for transfer of petroleum-based products under suction, low-pressure discharge or gravity flow. It can maintain flexibility down to -65°F (-54°C).



### Flexwing® VersaFuel™

Flexwing® VersaFuel™ is for use in tank truck and in-plant operations to transfer diesel, biodiesel blends, B-100, ethanol blends, gasoline, oil and petroleum-based products with up to 60% aromatic content.



### VersaFuel™ Flex

VersaFuel™ Flex is a flexible and lightweight hose designed to convey a multitude of new fuels. Used by tank trucks and bulk petroleum stations to transfer diesel, gasoline, biodiesel blends up to B100, ethanol blends up to E100 and petroleum-based products with up to 60% aromatic content. Full suction rating.



### Hoses best supplied with Insta-Lock™

Crimp specifications are available for all.

# Dispensing Hose



	Approvals	Color	Hose ID	Gasoline	Diesel	B5	B20	E10	E25	E85	Other Media	Reinforcement
BC Cold Flex	UL 330 / CUL	●	3/4" and 1"	✓	✓	✓		✓				Textile
BC Gasoline	UL 330 / CUL	●●●●	5/8", 3/4" and 1"	✓	✓	✓		✓				Textile
BC Marina	UL 330 / CUL	●●	3/4" and 1"	✓	✓	✓		✓				Textile
DEF Dispensing		●	1/2", 3/4" and 1"								Ad Blue / DEF	Textile
Flexsteel Futura	UL 330 / CUL	●●●●●	5/8", 3/4" and 1"	✓	✓	✓		✓				Wire
Flexsteel Futura B20	UL 330B	●	3/4" and 1"	✓	✓	✓	✓	✓				Wire
Flexsteel Futura E25	UL 330A	●	3/4"	✓	✓	✓		✓	✓			Wire
Flexsteel Futura Ethan-ALL E85	UL 330A	●	3/4"	✓	✓	✓		✓	✓	✓		Wire
Flexsteel Futura HVR Low Perm	UL 330 / CARB / EVR	●	3/4"	✓				✓				Wire
Flexsteel Futura Low Perm	UL 330 Low Permeation Requirements	●	3/4"	✓	✓	✓		✓				Wire
Flexsteel Futura Vapor Assist	UL 330	●	3/4"	✓				✓				Wire
LPG Delivery Pro	UL 21	●	1/2", 3/4", 1", 1-1/4" and 1-1/2"								LPG and Natural Gas*	Textile
Maxxim Premier Ultra	UL 330 / CARB / EVR	●	1-1/4"	✓				✓				Wire
Pacer	UL 330 / CUL	●	5/8", 3/4" and 1"	✓	✓	✓		✓				Textile

\*Only approved applications

## FEATURE HOSE Patent Protected



### Flexsteel® Futura™ Low Perm

The first UL Approved low permeation gasoline dispensing hose available to the market.

Flexsteel® Futura™ Low Perm dispensing hose offers superior, long-lasting service with multi-fuel capability. This hose is designed for use at filling stations to reduce permeation rates to 10 g/m<sup>2</sup>/day and improve air quality and emissions. Currently mandated for Ohio and New Jersey Stage II Vapor Assist decommissioning areas and for California conventional dispensing.

- › Premium abuse-resistant cover compound with enhanced ozone resistance for service longevity
- › Meets UL330 requirements
- › Meets stringent permeation requirements of less than 10 grams/m<sup>2</sup>/day.

## FEATURE HOSE



### Flexsteel® Futura™ Ethan-ALL™

Only UL Approved E85 hose on the market.

Specifically designed, engineered and manufactured to meet stringent UL 330A standards for ethanol dispensing. These assemblies use the Continental proprietary Fuel Grip fitting with a premium nickel coating to ensure corrosion is limited.

- › For both E25 and E85 dispensing
- › Capable of handling all blends of ethanol E1 to E85



<b>E85</b>	Flexsteel® Futura™ Ethan-ALL™*
<b>E25</b>	Flexsteel® Futura™ E25
<b>B20</b>	Flexsteel® Futura™ B20

\*For use on systems requiring E25/E85 UL listed equipment

## Biodiesel Up To B5 & Ethanol Up To E10

Flexsteel® Futura™  
Flexsteel® Futura™ Low Perm  
Pacer™  
BC Gasoline  
BC Marina  
BC Cold Flex

### MOST POPULAR



#### Flexsteel® Futura™

Our most ozone-resistant hose features the Flexsteel® Futurin cover that resists cracking, wear and fading for unmatched longevity. Flexsteel® Futura™ is designed for dispensing gasoline, diesel, ethanol blends (up to E10) and biodiesel blends (up to B5).

- › Premium hardwall wire braid reinforcement
- › UL 330 and CUL approved
- › Extraordinarily resistant to ozone cracking and wear
- › Cover retains colors better with higher gloss
- › Quality hose construction, quality assemblies



#### Flexsteel® Futura™ E25

Flexsteel® Futura™ E25 is designed for dispensing applications with ethanol blends up to 25%. It is UL approved to UL330/ UL330A. This hose is the only UL approved E25 hose on the market.

#### Industry Exclusive



#### Flexsteel® Futura™ B20

Continental's Flexsteel® Futura™ B20 is rated for biodiesel blends up to 20%. UL approved to UL330/UL330B for dispensing applications. Our Flexsteel® Futura™ B20 Hose is the only UL approved B20 hose on the market.



#### Flexsteel® Futura™ HVR Low Perm

Flexsteel® Futura HVR Low Perm features an abuse-resistant cover compound with enhanced ozone resistance for service longevity.

- › Meets UL330, CARB and EVR requirements
- › Factory-made assemblies with fittings designed for Healy Stage II Enhanced Vapor Recovery (EVR) Systems compatibility
- › Low permeation, less than 10g/m<sup>2</sup>/day




#### Flexsteel® Futura™ Vapor Assist

This hose is for Stage II Vacuum Assist Systems where a pump in the dispenser pulls the gasoline vapors away from the vehicle fill pipe during fueling. The wire braid construction for the fuel hose provides excellent kink resistance, low computer creep and a long service life. Flexsteel® Futura™ Vapor Assist is UL 330 approved.



Continental Dispensing Hoses  
are made in the USA

**ATTENTION:** Any petroleum dispensing hose assembly for use at a service station or marina must be in accordance with UL 330, CAN/ULC-S612 and NPFA. Effective January 31, 2013, all assemblies must be UL approved and wear the identifying registered component marker  and produced by an approved assembler. A hose that is not UL approved for petroleum dispensing and is used at a service station and marina is a safety and industry violation.



### BC Gasoline

With premium softwall construction, BC Gasoline is for all types of dispensing pump applications where kink resistance, flexibility and lighter weight are desired. This hose is designed for dispensing gasoline, diesel, ethanol blends (up to E10) and biodiesel blends (up to B5). BC Gasoline is available with one or two textile braids.

- › Premium softwall synthetic yarn braided reinforcement with static wire
- › UL 330 and CUL approved



### BC Marina

A hose for dispensing gasoline to pleasure craft and commercial boats at fresh and saltwater marinas. BC Marina's green and blue covers resist marking boats.

- › Premium softwall synthetic yarn braided reinforcement with static wire
- › UL 330 and CUL approved
- › Green/Blue Chemivic™ synthetic rubber cover



### BC Cold Flex™

A premium curb pump hose for use in extremely cold environments for dispensing gasoline, diesel, ethanol blends (up to E10), and biodiesel blends (up to B5). BC Cold Flex™ remains flexible when temperatures of -65°F (-54°C) are encountered.

- › Premium softwall synthetic yarn braided reinforcement with static wire
- › UL 330 and CUL approved
- › Black, wrapped low temp cover



### DEF Dispensing Hose

Stay ahead of the curve with our DEF Dispensing Hose. Specifically designed to dispense aqueous urea solutions for your diesel operations.

- › Peroxide cured EPDM tube provides superior extraction levels to significantly reduce contamination



### LPG Delivery Pro

LPG Delivery Pro™ is for residential and commercial delivery/transfer of liquid propane gas, LPG dispensing, LPG and natural gas industrial portable heaters. It has excellent cold weather flexibility, a smooth cover for low drag resistance and a low extraction tube to reduce contamination. This hose meets UL21, CGA and DOT requirements. Additional applications require prior approval. **Not for LP appliances or other consumer applications.**



### Maxxim™ Premier Ultra

With redesigned thermoplastic cover for improved flexibility and kink resistance, the newly updated MAXXIM™ Premier Ultra can withstand the continuous demanding application requirements better than ever. The new design still incorporates a Venturi pump in the protected confines of the inner fuel hose coupling to keep the vapor path open in the outer hose. As gasoline flows through the Venturi pump, gasoline accumulating in the bottom loop of the vapor hose is collected and returned to the fuel hose. This updated version is CARB, EVR and UL 330 approved.



### Pacer™

Superior 4-spiral softwall construction makes this hose ideal for use when flexibility and lighter weight are desired. Pacer™ is for all types of dispensing applications including gasoline, kerosene, diesel, ethanol blends (up to E10) and biodiesel (up to B5).

- › Spiral softwall synthetic yarn reinforcement with static wire
- › UL 330 and CUL approved



Continental Dispensing Hoses  
are made in the USA





# Car Wash Hoses



	Color	Hose ID	Temperature Range	Oil Resistance Tube	Oil Resistance Cover	Max WP	Tube / Cover Material	Non-Conductive
Frontier		3/16" - 2"	-40°F to 210°F	C	C	200 - 300	EPDM	No
Insta-Grip 300		3/16" - 1"	-40°F to 210°F	A	B	300	Nitrile	Yes
Neptune 1500		1/4" - 1/2"	-20°F to 210°F	N/A	B	1500	Nitrile	No
Neptune 3000		1/4" - 1/2"	-20°F to 250°F	N/A	B	3000	Nitrile	No
Neptune 4001-R		3/8"	-20°F to 250°F	N/A	B	4000	Nitrile	No
Pliovic® GS		1/4" - 1/2"	-10°F to 158°F	B	B	250	Polyvinyl Chloride	Yes
Pliovic® Plus 250		1/4" - 1"	-10°F to 158°F	B	B	250	Polyvinyl Chloride	Yes
Variflex		3/16" - 2"	-40°F to 210°F	A	A	200 - 300	Nitrile	Yes



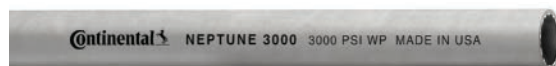
Look for the icon – indicated standard sizes are available and Ready 2 Go.

Time is money. Ready 2 Go saves you both. The Ready 2 Go (R2G) system features pre-coupled Continental hose assemblies ready for delivery, so you do less waiting. The R2G system is available in 37 different hose families, so we'll have the hose you need, when you need it.



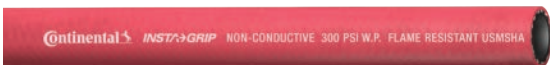
## Frontier™

An economical air and water hose, Frontier™ is for a wide range of industrial, construction and agricultural applications. Available in 200, 250, and 300 psi working pressures.



## Neptune™ 3000

Our Neptune™ 3000 can handle the pressure. Built specifically for use on pressure washer machines with working pressures up to 3000 psi. Nitrile synthetic rubber tube is oil resistant. Temperature Range: -20°F to 250°F (-29°C to 121°C)



## Insta-Grip™ 300

Designed for use with push-on fittings at working pressures of 300 psi in low-pressure hydraulic and pneumatic systems such as shop air systems, general industrial, maintenance and automotive manufacturing processes. Non-conductive, minimum electrical resistance greater than 1 megohm per inch of hose length at 1000 volts DC. MSHA (Flame Resistant Cover) approved colors.

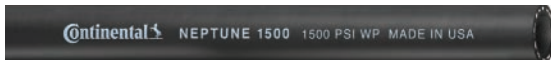


## Neptune™ 4001-R

Designed for dealing with pressure situations. The Neptune™ 4001-R is for high-pressure washer equipment with working pressures up to 4000 psi. The nitrile synthetic rubber tube is oil resistant and incorporates a braided steel wire reinforcement for extra strength



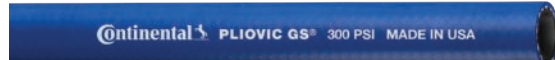
R2G



### Neptune™ 1500

Precision engineered for pressure washer equipment, agricultural sprayers and high-pressure air lines. It's made in the USA from oil resistant Nitrile synthetic rubber and braided synthetic yarn.

R2G



### Pliovic® GS

A lightweight, economical general purpose hose for carrying air, water and many spray solutions, Pliovic® is suitable for a wide range of industrial, construction, agricultural hand sprayers and many multipurpose applications. Non-conductive, minimum electrical resistance greater than 1 megohm per inch of hose length at 1000 volts DC.

R2G



### Pliovic® Plus 250

A lightweight, economical general purpose hose for carrying air, water and many spray solutions, Pliovic® is suitable for a wide range of industrial, construction, agricultural hand sprayers and many multipurpose applications. Non-conductive, minimum electrical resistance greater than 1 megohm per inch of hose length at 1000 volts DC.

R2G



### VariFlex™

A good-quality, economical general purpose hose for industrial air service, compressor lines, pneumatic tools, low-pressure spray and many other applications where the need for oil resistance is moderate. Non-conductive, minimum electrical resistance greater than 1 megohm per inch of length of hose at 1000 volts DC. Available in 200 and 300 psi working pressures



Continental Car Wash Hoses  
are made in the USA

# Service Station Air Hoses



	Color	Hose ID	Temperature Range	Oil Resistance Tube	Oil Resistance Cover	Max WP	Tube / Cover Material	Reinforcement
Flexsteel Service Station Air		1/4" & 3/8"	-20°F to 210°F	B	B	250	Nitrile	Braided Steel Wire
Service Station Air		1/4" & 3/8"	-40°F to 210°F	C	C	250	EPDM	Spiral Synthetic Yarn

**R2G** Look for the icon – indicated standard sizes are available and Ready 2 Go.

Time is money. Ready 2 Go saves you both. The Ready 2 Go (R2G) system features pre-coupled Continental hose assemblies ready for delivery, so you do less waiting. The R2G system is available in 37 different hose families, so we'll have the hose you need, when you need it.



### Flexsteel® Service Station Air

For tire inflation service from towers, reels or curb connections.



### Service Station Air

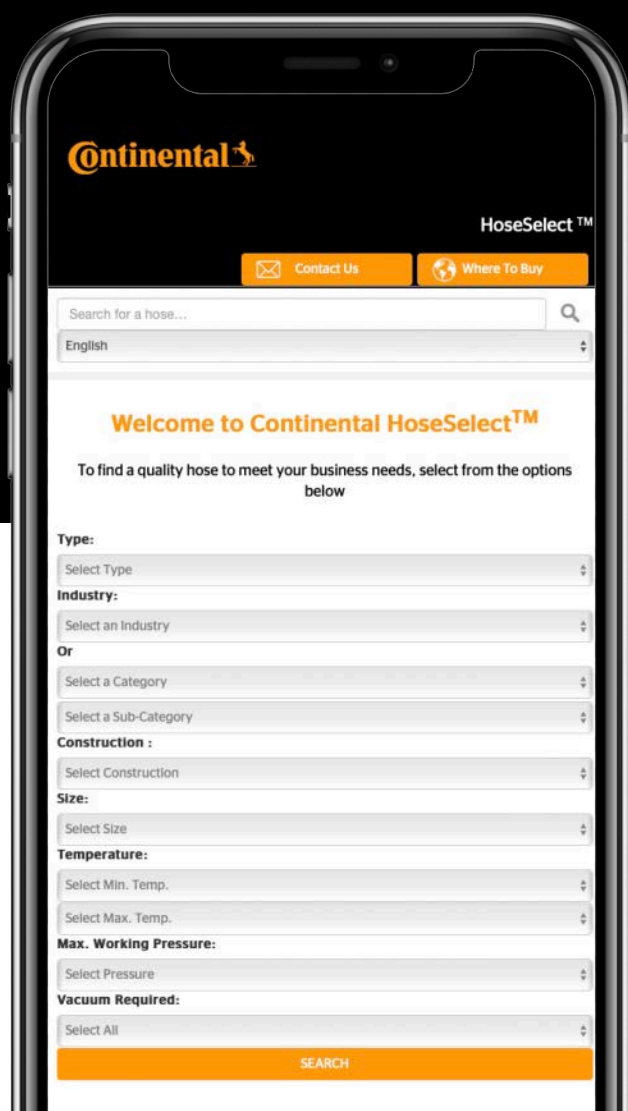
For general airline service stations, automobile repair shops, garages, etc.



Continental Service Station Air Hoses are made in the USA







## HoseSelect.com

### TO FIND A QUALITY HOSE TO MEET YOUR BUSINESS NEEDS

We can help you match the ideal hose for your application. To find the industrial hose for your exact needs, use this handy Hose Selector. Once you have the hose you're looking for, use our locator to find your local distributor.



### Retail Petroleum and Service Stations

#### DISPENSING HOSES

BC COLD FLEX  
BC GASOLINE  
BC MARINA  
DEF DISPENSING  
FLEXSTEEL FUTURA

FLEXSTEEL FUTURA B20  
FLEXSTEEL FUTURA E25  
FLEXSTEEL FUTURA ETHAN-ALL E85  
FLEXSTEEL FUTURA HVR LOW PERM  
FLEXSTEEL FUTURA LOW PERM

FLEXSTEEL FUTURA VAPOR ASSIST  
LPG DELIVERY PRO  
MAXXIM PREMIER ULTRA  
PACER

#### DROP HOSES

INFINITY  
INFINITY HD  
PALADIN  
VELOCITY PETROLEUM

#### CAR WASH HOSES

PLIOVIC PLUS 250  
PLIOVIC GS  
FRONTIER  
INSTA-GRIP 300  
VARIFLEX  
NEPTUNE 4001-R  
NEPTUNE 3000  
NEPTUNE 1500

#### SERVICE STATION AIR HOSES

FLEXSTEEL SERVICE STATION AIR  
SERVICE STATION AIR

Contact

Continental

703 S. Cleveland Massillon Road  
Fairlawn, OH 44333-3023 U.S.A.  
1-800-235-4632  
[www.continental-industry.com](http://www.continental-industry.com)

Your local contact

[www.contitech.de/contactlocator](http://www.contitech.de/contactlocator)

Canada

1-888-275-4397

Mexico

1-800-439-7373