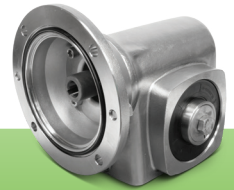
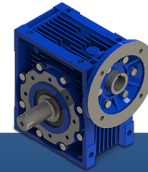
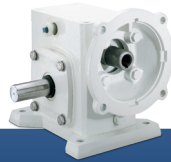


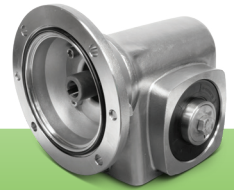














# Unlocking Efficiency: Stainless Steel Worm Gear Speed Reducers in Food & Beverage Manufacturing

## Discovering Stainless Steel's Superiority, Durability, and Hygiene Advantage



	 <b>PAINTED / COATED Worm Gear Speed Reducers</b>	 <b>ALUMINUM ALLOY Worm Gear Speed Reducers</b>	 <b>STAINLESS STEEL Worm Gear Speed Reducers</b>
Meets Compliance Regulations for Use At or Above the Food Line	 * <small>In some instances, for some food products</small>		
Base Material	Cast Iron	Aluminum Alloy	316 Stainless Steel
Effortless Removal of Residual Manufacturing Oils: No Cleaning Process Required			
Exposure Resistance to pH	<p>pH 2 thru 12*</p> <small>Resistance may break down over time</small>	pH 4 thru 8.5	pH 2 thru 12
Resistant to Washdown Abrasion and Scrubbing			
Minimal Thermal Expansion Oil Leak Risk			
Elimination of Food Traps	Moderate	<p>Poor*</p> <small>(Requires cooling fins)</small>	Excellent
Enhanced Water Runoff for Effective Cleaning	Not Ideal	Poor	Excellent

