

# TIMKEN

## STEEL HOUSING. BETTER SEALING. LONGER LIFE.

### TIMKEN® SELF-ALIGNING TAPERED ROLLER BEARING HOUSED UNITS

Timken® Self-Aligning Tapered Roller Bearing Housed Units are designed for applications from aggregate and steel to mining and power generation. The heavy duty housing and cartridge are made from cast steel to stand up to the harshest conditions, and are designed to accept up to +/-4 degrees of misalignment.

The tapered roller bearing yields a design life that is 47%-113% higher than current industry leading competitor. Timken high-performance seals are seven times more effective against water ingress.

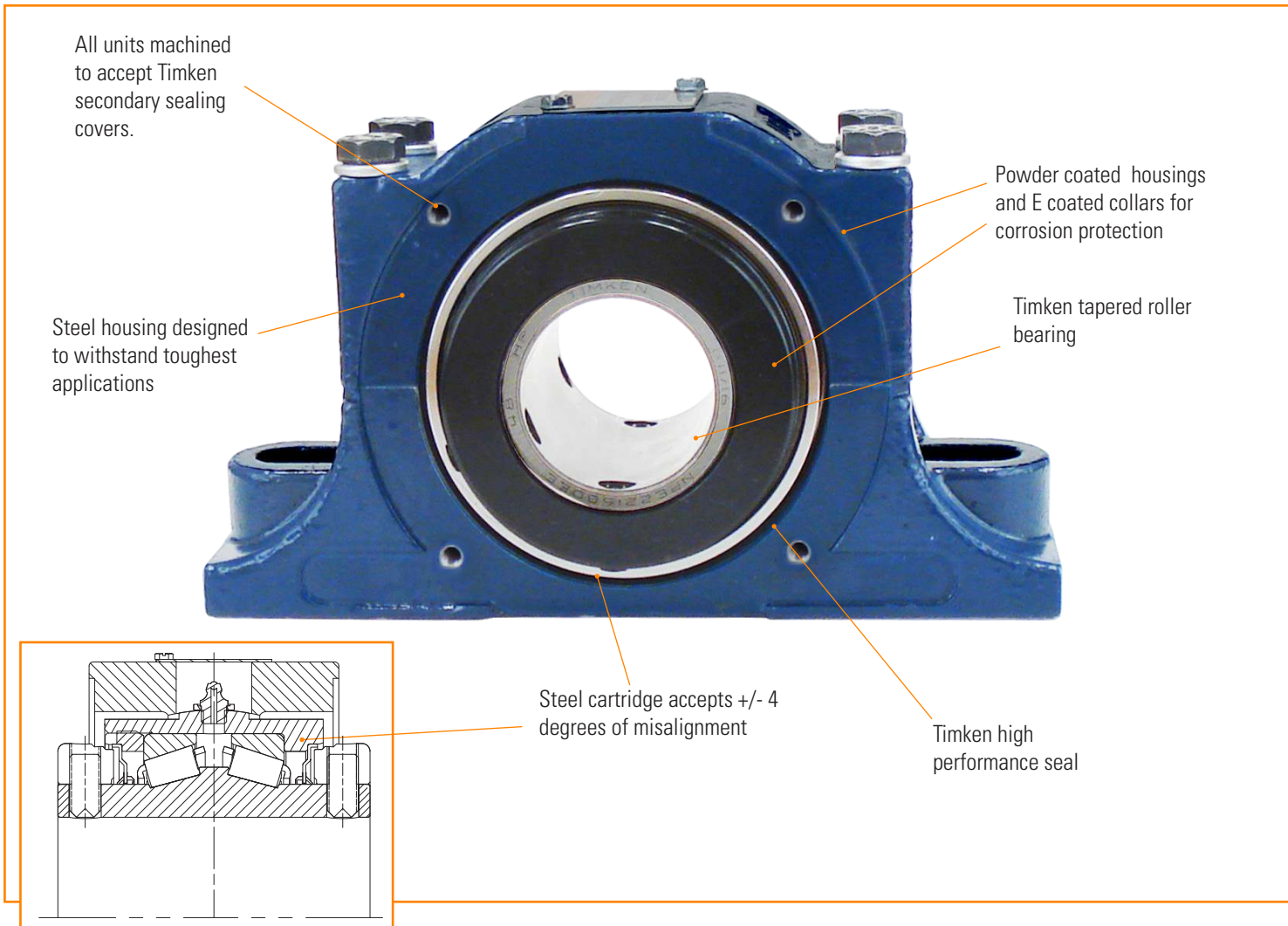
Available in two-bolt pillow block sizes 1 3/16 - 3 1/2 in. (35-90 mm), four-bolt pillow block sizes 2 1/4 - 5 in (60-125 mm) and four-bolt flange sizes 1 3/16 - 4 1/2 in. (35-115 mm)

#### BETTER FROM THE INSIDE OUT

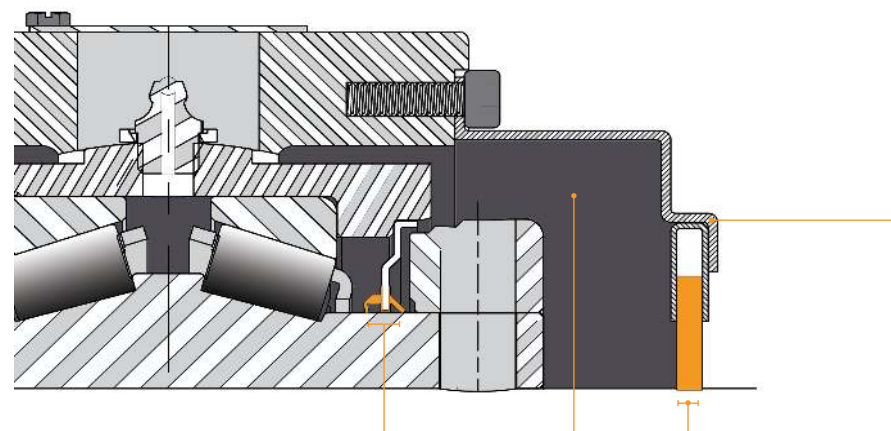
- 47%–113% longer life with optimized Timken tapered roller bearings
- Lower bearing operating temperatures
- Improved lube film thickness
- Reduced internal stresses
- Optimized bearing profiles and improved surface finishes
- Cast steel housings accept secondary sealing covers



# SELF-ALIGNING TAPERED ROLLER BEARING HOUSED UNITS



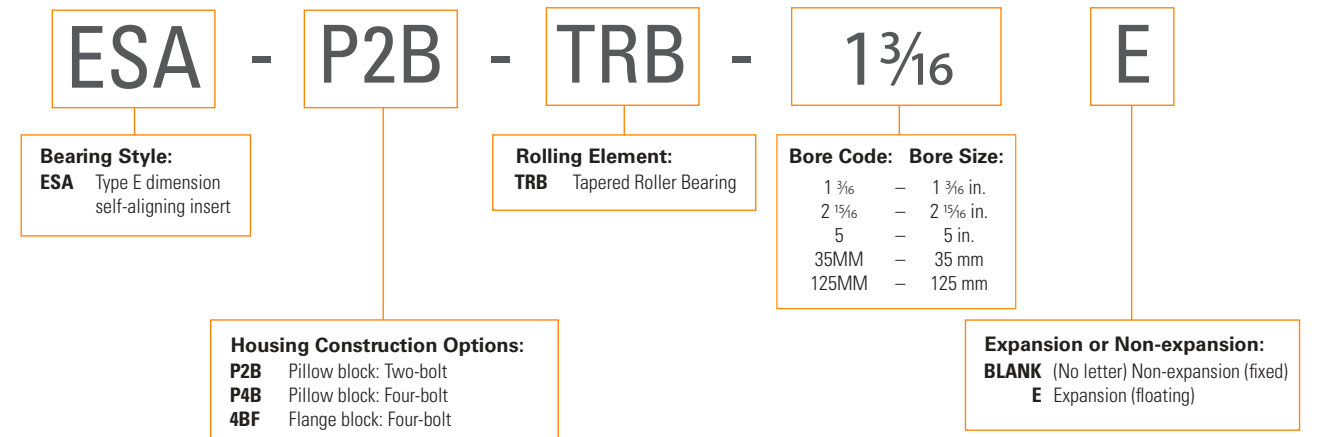
**UNRIVALED  
MULTI-POINT  
SEALING SYSTEM**



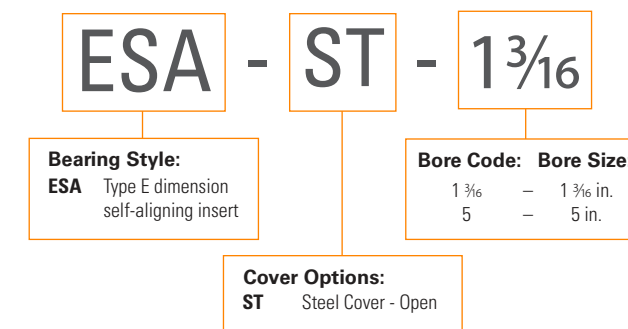
<b>Upgraded triple-barrier internal bearing seal</b> <ul style="list-style-type: none"> <li>Two contact lips and one rigid middle labyrinth section to help retain grease and reduce contamination ingress</li> <li>New enhanced seal material to provide greater performance with 2X more abrasion resistance than the industry standard nitrile seal</li> </ul>	<b>Full grease pack in cover</b> (all covers have grease zerks)	<b>Single lip Teflon through Shaft Seal</b>	<b>External through shaft cover</b> (steel)
<b>3</b>	<b>1</b>	<b>1</b>	<b>1</b>

# TIMKEN® SELF-ALIGNING TAPERED ROLLER BEARING HOUSED UNITS NOMENCLATURE

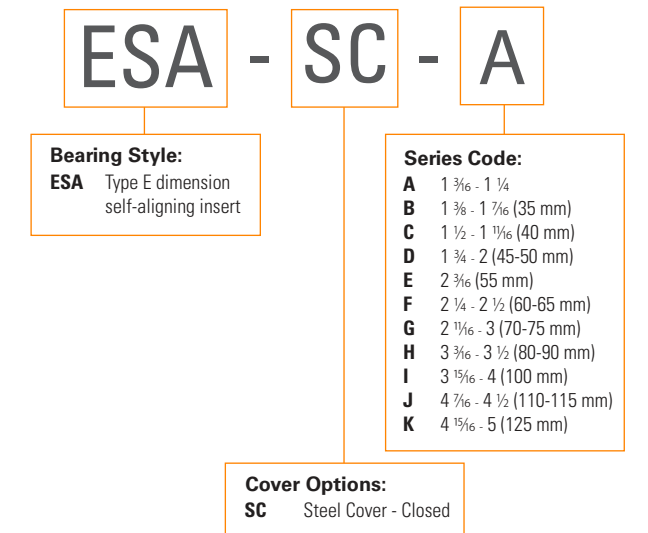
## SELF-ALIGNING TAPERED ROLLER BEARING HOUSED UNITS NOMENCLATURE



## OPEN END COVER NOMENCLATURE

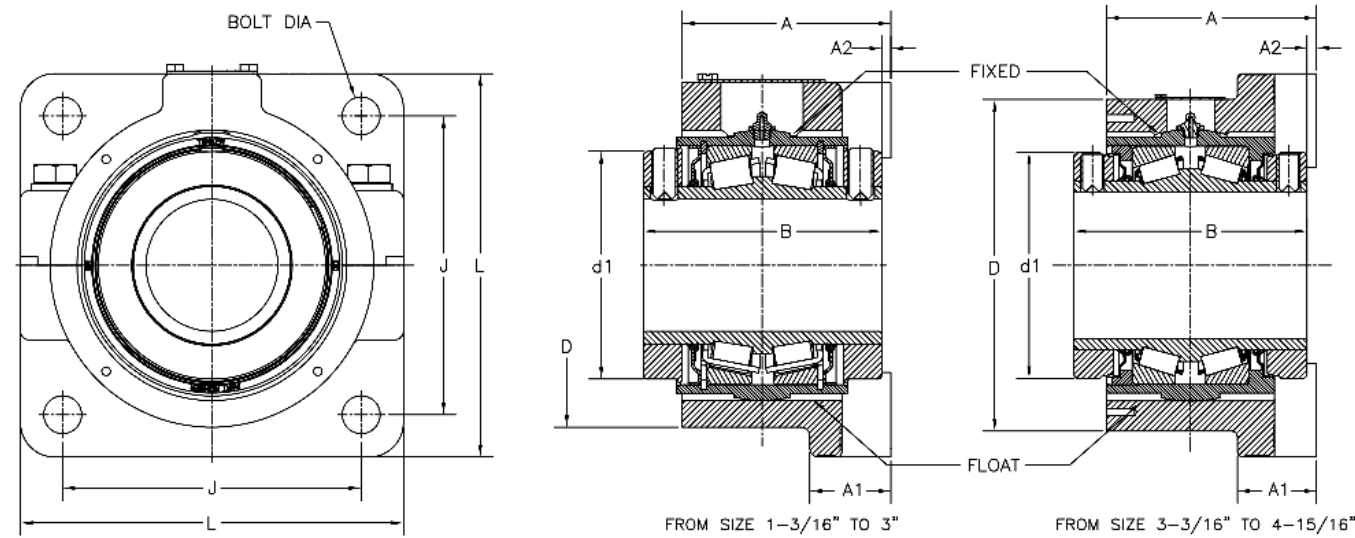


## CLOSED END COVER NOMENCLATURE

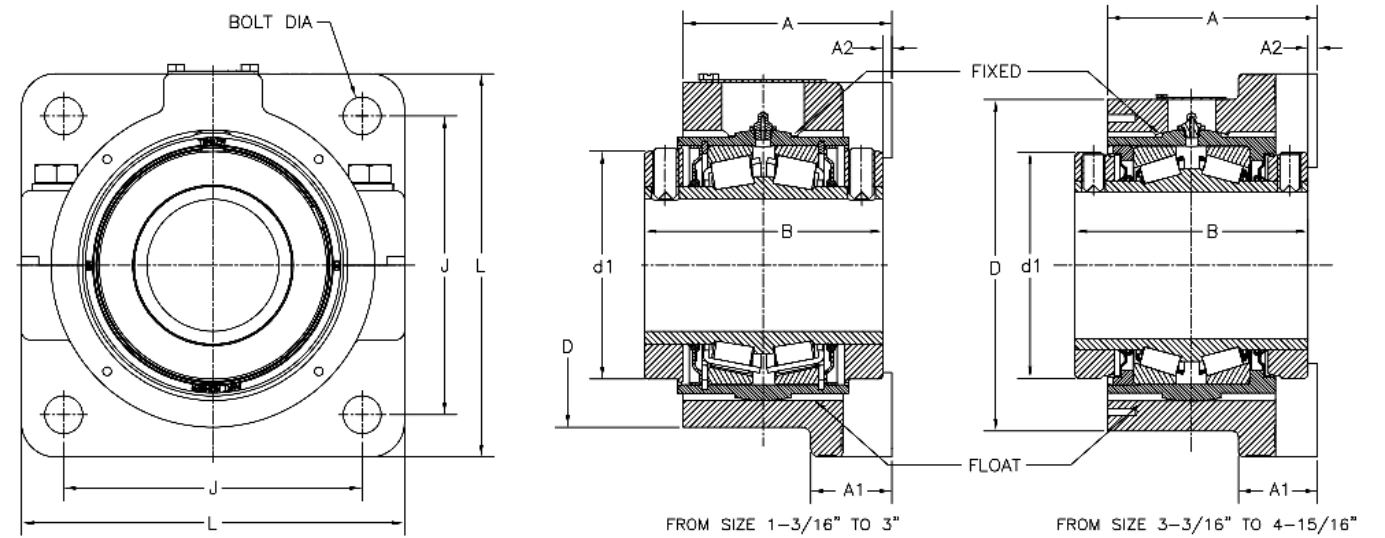




# FOUR-BOLT FLANGE



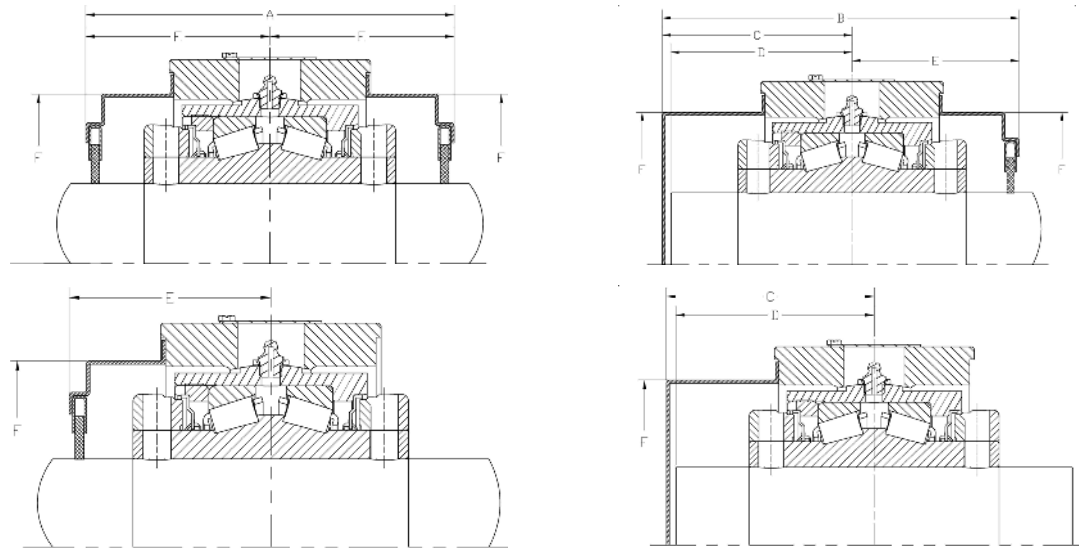
# FOUR-BOLT FLANGE



Shaft Dia.	Housing Part No. Non-Expansion	Housing Part No. Expansion	B	L	A	J	A2	Bolt Dia	A1	D	d1	Expansion	Approx. Wt.
mm in.			mm in.	mm in.	mm in.	mm in.	mm in.	mm in.	mm in.	mm in.	mm in.	mm in.	kg lbs.
1 3/16	ESA-4BF-TRB-1 3/16	ESA-4BF-TRB-1 3/16 E	69.9 2 3/4	101.6 4	58.7 2 5/16	73.0 2 7/8	1.2 3/64	1.2 3/64	25.4 1	88.9 3 1/2	57.2 2 1/4	14.3 9/16	2.6 5.8
1 1/4	ESA-4BF-TRB-1 1/4	ESA-4BF-TRB-1 1/4 E											
1 3/8	ESA-4BF-TRB-1 3/8	ESA-4BF-TRB-1 3/8 E	76.2 3	117.5 4 5/8	65.1 2 9/16	88.9 3 1/2	1.2 3/64	1.2 3/64	25.4 1	101.6 4	69.9 2 3/4	14.3 9/16	3.7 8.1
1 7/16	ESA-4BF-TRB-1 7/16	ESA-4BF-TRB-1 7/16 E											
<b>35 mm</b>	<b>ESA-4BF-TRB-35MM</b>	<b>ESA-4BF-TRB-35MME</b>	85.9 3 3/8	136.5 5 3/8	74.6 2 15/16	104.8 4 1/8	3.2 1/8	3.2 1/8	30.2 1 3/16	121.2 4 13/16	80.9 3 1/16	14.3 9/16	5.8 12.7
1 1/2	ESA-4BF-TRB-1 1/2	ESA-4BF-TRB-1 1/2 E											
1 5/8	ESA-4BF-TRB-1 5/8	ESA-4BF-TRB-1 5/8 E											
1 11/16	ESA-4BF-TRB-1 11/16	ESA-4BF-TRB-1 11/16 E											
<b>40 mm</b>	<b>ESA-4BF-TRB-40MM</b>	<b>ESA-4BF-TRB-40MME</b>											
1 3/4	ESA-4BF-TRB-1 3/4	ESA-4BF-TRB-1 3/4 E	88.9 3 1/2	142.9 5 5/8	77.8 3 1/16	111.1 4 3/8	3.2 1/8	3.2 1/8	30.2 1 3/16	120.7 4 3/4	87.1 3 7/16	14.3 9/16	5.9 13.1
1 7/8	ESA-4BF-TRB-1 7/8	ESA-4BF-TRB-1 7/8 E											
1 15/16	ESA-4BF-TRB-1 15/16	ESA-4BF-TRB-1 15/16 E											
2	ESA-4BF-TRB-2	ESA-4BF-TRB-2 E											
<b>45 mm</b>	<b>ESA-4BF-TRB-45MM</b>	<b>ESA-4BF-TRB-45MME</b>											
<b>50 mm</b>	<b>ESA-4BF-TRB-50MM</b>	<b>ESA-4BF-TRB-50MME</b>	95.3 3 3/4	158.8 6 1/4	82.6 3 1/4	123.8 4 7/8	2.4 3/32	2.4 3/32	34.9 1 3/8	133.4 5 1/4	95.0 3 3/4	14.3 9/16	7.8 17.3
2 3/16	ESA-4BF-TRB-2 3/16	ESA-4BF-TRB-2 3/16 E											
<b>55 mm</b>	<b>ESA-4BF-TRB-55MM</b>	<b>ESA-4BF-TRB-55MME</b>											
2 1/4	ESA-4BF-TRB-2 1/4	ESA-4BF-TRB-2 1/4 E											
2 7/16	ESA-4BF-TRB-2 7/16	ESA-4BF-TRB-2 7/16 E											
2 1/2	ESA-4BF-TRB-2 1/2	ESA-4BF-TRB-2 1/2 E	101.6 4	174.6 6 7/8	90.5 3 3/16	136.5 5 3/8	4.0 5/32	4.0 5/32	38.1 1 1/2	149.2 5 7/8	103.2 4 1/16	14.3 9/16	10.5 23.1
<b>60 mm</b>	<b>ESA-4BF-TRB-60MM</b>	<b>ESA-4BF-TRB-60MME</b>											
<b>65 mm</b>	<b>ESA-4BF-TRB-65MM</b>	<b>ESA-4BF-TRB-65MME</b>											

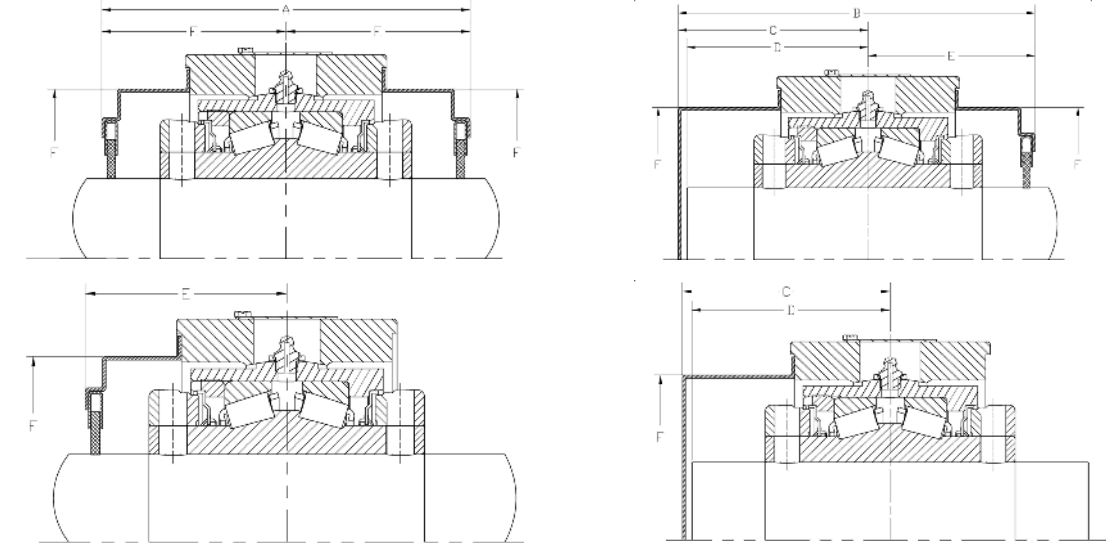
Shaft Dia.	Housing Part No. Non-Expansion	Housing Part No. Expansion	B	L	A	J	A2	Bolt Dia	A1	D	d1	Expansion	Approx. Wt.
mm in.			mm in.	mm in.	mm in.	mm in.	mm in.	mm in.	mm in.	mm in.	mm in.	mm in.	kg lbs.
2 11/16	ESA-4BF-TRB-2 11/16	ESA-4BF-TRB-2 11/16 E	114.3 4 1/2	196.9 7 3/4	100.0 3 15/16	152.4 6	5.6 7/32	5.6 7/32	41.3 1 5/8	165.1 6 1/2	119.9 4 23/32	14.3 9/16	15.6 34.5
2 3/4	ESA-4BF-TRB-2 3/4	ESA-4BF-TRB-2 3/4 E											
2 15/16	ESA-4BF-TRB-2 15/16	ESA-4BF-TRB-2 15/16 E											
3	ESA-4BF-TRB-3	ESA-4BF-TRB-3 E											
<b>70 mm</b>	<b>ESA-4BF-TRB-70MM</b>	<b>ESA-4BF-TRB-70MME</b>											
<b>75 mm</b>	<b>ESA-4BF-TRB-75MM</b>	<b>ESA-4BF-TRB-75MME</b>	127.0 5	235.0 9 1/4	114.3 4 1/2	177.8 7	6.4 1/4	6.4 1/4	47.6 1 7/8	203.2 8	140.5 5 17/32	14.3 9/16	25.5 56.3
3 3/16	ESA-4BF-TRB-3 3/16	ESA-4BF-TRB-3 3/16 E											
3 1/4	ESA-4BF-TRB-3 1/4	ESA-4BF-TRB-3 1/4 E											
3 7/16	ESA-4BF-TRB-3 7/16	ESA-4BF-TRB-3 7/16 E											
3 1/2	ESA-4BF-TRB-3 1/2	ESA-4BF-TRB-3 1/2 E											
<b>80 mm</b>	<b>ESA-4BF-TRB-80MM</b>	<b>ESA-4BF-TRB-80MME</b>	158.8 6 1/4	260.4 10 1/4	142.9 5 5/8	196.9 7 3/4	6.4 1/4	6.4 1/4	54.0 2 1/8	225.4 8 7/8	154.0 6 1/16	14.3 9/16	38.2 84.2
<b>85 mm</b>	<b>ESA-4BF-TRB-85MM</b>	<b>ESA-4BF-TRB-85MME</b>											
<b>90 mm</b>	<b>ESA-4BF-TRB-90MM</b>	<b>ESA-4BF-TRB-90MME</b>											
3 15/16	ESA-4BF-TRB-3 15/16	ESA-4BF-TRB-3 15/16 E											
4	ESA-4BF-TRB-4	ESA-4BF-TRB-4 E											
<b>100 mm</b>	<b>ESA-4BF-TRB-100MM</b>	<b>ESA-4BF-TRB-100MME</b>	171.5 6 3/4	292.1 11 1/2	152.4 6	222.3 8 3/4	8.3 2 1/64	8.3 2 1/64	66.7 2 5/8	247.7 9 3/4	171.1 6 47/64	14.3 9/16	51.6 113.9
4 7/16	ESA-4BF-TRB-4 7/16	ESA-4BF-TRB-4 7/16 E											
4 1/2	ESA-4BF-TRB-4 1/2	ESA-4BF-TRB-4 1/2 E											
<b>110 mm</b>	<b>ESA-4BF-TRB-110MM</b>	<b>ESA-4BF-TRB-110MME</b>											
<b>115 mm</b>	<b>ESA-4BF-TRB-115MM</b>	<b>ESA-4BF-TRB-115MME</b>											

# TYPE E SELF ALIGNING SECONDARY COVERS



Cover Part Number	Shaft Dia.	Steel Cover Dimension					
		A	B	C	D	E	F
ESASC-A	Closed	<b>112.9</b> 4 7/16	<b>121.9</b> 4 13/16	<b>65.5</b> 2 19/32	<b>61.8</b> 2 13/32	<b>56.5</b> 2 7/32	<b>74.7</b> 2 15/16
ESAST-1 3/16	1 3/16						
ESAST-1 1/4	1 1/4						
ESASC-B	Closed	<b>120.8</b> 4 3/4	<b>135.7</b> 5 11/32	<b>75.3</b> 2 31/32	<b>71.2</b> 2 13/16	<b>60.4</b> 2 3/8	<b>89.7</b> 3 17/32
ESAST-1 3/8	1 3/8						
ESAST-1 7/16	1 7/16						
<b>ESAST-35MME</b>	<b>35MM</b>						
ESASC-C	Closed	<b>119.9</b> 4 23/32	<b>143.7</b> 5 21/32	<b>83.7</b> 3 5/16	<b>79.7</b> 3 1/8	<b>60.0</b> 2 3/8	<b>103.6</b> 4 1/16
ESAST-1 1/2	1 1/2						
ESAST-1 5/8	1 5/8						
ESAST-1 11/16	1 11/16						
<b>ESAST-40MME</b>	<b>40MM</b>						
ESASC-D	Closed	<b>124.3</b> 4 29/32	<b>148.0</b> 5 13/16	<b>85.9</b> 3 3/8	<b>81.8</b> 3 7/32	<b>62.1</b> 2 7/16	<b>103.6</b> 4 1/16
ESAST-1 3/4	1 3/4						
ESAST-1 7/8	1 7/8						
ESAST-1 15/16	1 15/16						
ESAST-2	2						
<b>ESAST-45MME</b>	<b>45MM</b>						
<b>ESAST-50MME</b>	<b>50MM</b>						
ESASC-E	Closed	<b>139.6</b> 5 1/2	<b>157.1</b> 6 3/16	<b>87.3</b> 3 7/16	<b>83.2</b> 3 9/32	<b>69.8</b> 2 3/4	<b>116.0</b> 4 9/16
ESAST-2 3/16	2 3/16						
<b>ESAST-55MME</b>	<b>55MM</b>						
ESASC-F	Closed	<b>131.5</b> 5 3/16	<b>153.4</b> 6 1/32	<b>87.7</b> -	<b>83.6</b> 3 9/32	<b>65.8</b> 2 19/32	<b>132.1</b> 5 3/16
ESAST-2 1/4	2 1/4						
ESAST-2 7/16	2 7/16						
ESAST-2 1/2	2 1/2						
<b>ESAST-60MME</b>	<b>60MM</b>						
<b>ESAST-65MME</b>	<b>65MM</b>						

# TYPE E SELF ALIGNING SECONDARY COVERS



Cover Part Number	Shaft Dia.	Steel Cover Dimension					
		A	B	C	D	E	F
ESASC-G	Closed	<b>164.3</b> 6 15/32	<b>187.5</b> 7 3/8	<b>105.3</b> 4 5/32	<b>101.3</b> 4	<b>82.2</b> 3 1/4	<b>139.5</b> 5 1/2
ESAST-2 1/16	2 1/16						
ESAST-2 3/4	2 3/4						
ESAST-3	3						
<b>ESAST-70MM</b>	<b>70MM</b>						
<b>ESAST-75MM</b>	<b>75MM</b>						
ESASC-H	Closed	<b>186.4</b> 7 11/32	<b>199.1</b> 7 13/16	<b>105.9</b> 4 5/32	<b>101.9</b> 4	<b>93.2</b> 3 21/32	<b>171.5</b> 6 3/4
ESAST-3 3/16	3 3/16						
ESAST-3 1/4	3 1/4						
ESAST-3 7/16	3 7/16						
ESAST-3 1/2	3 1/2						
<b>ESAST-80MME</b>	<b>80MM</b>						
<b>ESAST-85MME</b>	<b>85MM</b>						
<b>ESAST-90MME</b>	<b>90MM</b>						
ESASC-I	Closed	<b>205.2</b> 8 3/32	<b>218.3</b> 8 19/32	<b>115.1</b> 4 17/32	<b>111.3</b> 4 3/8	<b>102.4</b> 4 1/32	<b>186.9</b> 7 3/8
ESAST-3 15/16	3 15/16						
ESAST-4	4						
<b>ESAST-100MME</b>	<b>100MM</b>						
ESASC-J	Closed	<b>236.0</b> 9 9/32	<b>259.6</b> 10 7/32	<b>115.9</b> 4 9/16	<b>137.3</b> 5 13/32	<b>118.0</b> 4 21/32	<b>208.8</b> 8 8/32
ESAST-4 7/16	4 7/16						
ESAST-4 1/2	4 1/2						
<b>ESAST-110MM</b>	<b>110MM</b>						
<b>ESAST-115MM</b>	<b>115MM</b>						
ESASC-K	Closed	<b>253.4</b> 9 31/32	<b>266.4</b> 10 1/2	<b>139.7</b> 5 1/2	<b>135.7</b> 5 11/32	<b>126.7</b> 5	<b>239.5</b> 9 7/16
ESAST-4 15/16	4 15/16						
ESAST-5	5						
<b>ESAST-125MM</b>	<b>125MM</b>						

# Self-Aligning Tapered Roller Bearing Housed Unit Interchange

# TIMKEN



## Pillow Block

Dodge Part Number*	SealMaster Part Number*		TIMKEN			
Assembled Unit	Assembled Unit	Assembled Unit Single Collar	Cast Steel Housings	Assembled Unit*	Optional Secondary Sealing Covers - OPEN	Optional Secondary Sealing Covers - CLOSED
P2B-EXL-103-R	RPB-103-2			ESA-P2B-TRB-1 3/16	ESAST-1 3/16	ESASC-A
P2B-EXL-104-R	RPB-104-2			ESA-P2B-TRB-1 1/4	ESAST-1 1/4	ESASC-A
P2B-EXL-106-R	RPB-106-2			ESA-P2B-TRB-1 3/8	ESAST-1 3/8	ESASC-B
P2B-EXL-107-R	RPB-107-2			ESA-P2B-TRB-1 7/16	ESAST-1 7/16	ESASC-B
P2B-EXL-108-R	RPB-108-2		SPB-108-2	ESA-P2B-TRB-1 1/2	ESAST-1 1/2	ESASC-C
P2B-EXL-110-R	RPB-110-2		SPB-110-2	ESA-P2B-TRB-1 5/8	ESAST-1 5/8	ESASC-C
P2B-EXL-111-R	RPB-111-2		SPB-111-2	ESA-P2B-TRB-1 11/16	ESAST-1 11/16	ESASC-C
P2B-EXL-112-R	RPB-112-2	RPBA-112-2	SPB-112-2	ESA-P2B-TRB-1 3/4	ESAST-1 3/4	ESASC-D
P2B-EXL-114-R	RPB-114-2	RPBA-114-2	SPB-114-2	ESA-P2B-TRB-1 7/8	ESAST-1 7/8	ESASC-D
P2B-EXL-115-R	RPB-115-2	RPBA-115-2	SPB-115-2	ESA-P2B-TRB-1 15/16	ESAST-1 15/16	ESASC-D
P2B-EXL-200-R	RPB-200-2	RPBA-200-2	SPB-200-2	ESA-P2B-TRB-2	ESAST-2	ESASC-D
P2B-EXL-203-R	RPB-203-2	RPBA-203-2	SPB-203-2	ESA-P2B-TRB-2 3/16	ESAST-2 3/16	ESASC-E
P2B-EXL-204-R	RPB-204-2	RPBA-204-2	SPB-204-2	ESA-P2B-TRB-2 1/4	ESAST-2 1/4	ESASC-F
P2B-EXL-207-R	RPB-207-2	RPBA-207-2	SPB-207-2	ESA-P2B-TRB-2 7/16	ESAST-2 7/16	ESASC-F
P2B-EXL-208-R	RPB-208-2	RPBA-208-2	SPB-208-2	ESA-P2B-TRB-2 1/2	ESAST-2 1/2	ESASC-F
P2B-EXL-211-R	RPB-211-2	RPBA-211-2	SPB-211-2	ESA-P2B-TRB-2 11/16	ESAST-2 11/16	ESASC-G
P2B-EXL-212-R	RPB-212-2	RPBA-212-2	SPB-212-2	ESA-P2B-TRB-2 3/4	ESAST-2 3/4	ESASC-G
P2B-EXL-215-R	RPB-215-2	RPBA-215-2	SPB-215-2	ESA-P2B-TRB-2 15/16	ESAST-2 15/16	ESASC-G
P2B-EXL-300-R	RPB-300-2	RPBA-300-2	SPB-300-2	ESA-P2B-TRB-3	ESAST-3	ESASC-G
P2B-EXL-303-R	RPB-303-2	RPBA-303-2	SPB-303-2	ESA-P2B-TRB-3 3/16	ESAST-3 3/16	ESASC-H
P2B-EXL-304-R	RPB-304-2	RPBA-304-2	SPB-304-2	ESA-P2B-TRB-3 1/4	ESAST-3 1/4	ESASC-H
P2B-EXL-307-R	RPB-307-2	RPBA-307-2	SPB-307-2	ESA-P2B-TRB-3 7/16	ESAST-3 7/16	ESASC-H
P2B-EXL-308-R	RPB-308-2	RPBA-308-2	SPB-308-2	ESA-P2B-TRB-3 1/2	ESAST-3 1/2	ESASC-H
P4B-EXL-204-R	RPB-204-4	RPBA-204-4		ESA-P4B-TRB-2 1/4	ESAST-2 1/4	ESASC-F
P4B-EXL-207-R	RPB-207-4	RPBA-207-4		ESA-P4B-TRB-2 7/16	ESAST-2 7/16	ESASC-F
P4B-EXL-208-R	RPB-208-4	RPBA-208-4		ESA-P4B-TRB-2 1/2	ESAST-2 1/2	ESASC-F
P4B-EXL-211-R	RPB-211-4	RPBA-211-4		ESA-P4B-TRB-2 11/16	ESAST-2 11/16	ESASC-G
P4B-EXL-212-R	RPB-212-4	RPBA-212-4		ESA-P4B-TRB-2 3/4	ESAST-2 3/4	ESASC-G
P4B-EXL-215-R	RPB-215-4	RPBA-215-4		ESA-P4B-TRB-2 15/16	ESAST-2 15/16	ESASC-G
P4B-EXL-300-R	RPB-300-4	RPBA-300-4		ESA-P4B-TRB-3	ESAST-3	ESASC-G
P4B-EXL-303-R	RPB-303-4	RPBA-303-4		ESA-P4B-TRB-3 3/16	ESAST-3 3/16	ESASC-H
P4B-EXL-304-R	RPB-304-4	RPBA-304-4		ESA-P4B-TRB-3 1/4	ESAST-3 1/4	ESASC-H
P4B-EXL-307-R	RPB-307-4	RPBA-307-4		ESA-P4B-TRB-3 7/16	ESAST-3 7/16	ESASC-H
P4B-EXL-308-R	RPB-308-4	RPBA-308-4		ESA-P4B-TRB-3 1/2	ESAST-3 1/2	ESASC-H
P4B-EXL-315-R	RPB-315-4	RPBA-315-4	SPB-315-4	ESA-P4B-TRB-3 15/16	ESAST-3 15/16	ESASC-I
P4B-EXL-400-R	RPB-400-4		SPB-400-4	ESA-P4B-TRB-4	ESAST-4	ESASC-I
P4B-EXL-407-R	RPB-407-4		SPB-407-4	ESA-P4B-TRB-4 7/16	ESAST-4 7/16	ESASC-J
P4B-EXL-408-R	RPB-408-4		SPB-408-4	ESA-P4B-TRB-4 1/2	ESAST-4 1/2	ESASC-J
P4B-EXL-415-R	RPB-415-4		SPB-415-4	ESA-P4B-TRB-4 15/16	ESAST-4 15/16	ESASC-K
P4B-EXL-500-R	RPB-500-4		SPB-500-4	ESA-P4B-TRB-5	ESAST-5	ESASC-K

\*Available in expansion and non-expansion type bearings  
Note: SealMaster single collar has shorter length thru-bore than the Timken double collar.

# Self-Aligning Tapered Roller Bearing Housed Unit Interchange

# TIMKEN



## Four-Bolt Flange Block

SealMaster Part Number*		TIMKEN		
COMPLETE Double Collar	COMPLETE Single Collar	Assembled Unit*	Steel Open End Cover	Steel Closed End Cover
RFB-103	RFB-A-103	ESA-4BF-TRB-1 3/16	ESAST-1 3/16	ESASC-A
RFB-104	RFB-A-104	ESA-4BF-TRB-1 1/4	ESAST-1 1/4	ESASC-A
RFB-106	RFB-A-106	ESA-4BF-TRB-1 3/8	ESAST-1 7/16	ESASC-B
RFB-107	RFB-A-107	ESA-4BF-TRB-1 7/16	ESAST-1 7/16	ESASC-B
RFB-108	RFB-A-108	ESA-4BF-TRB-1 1/2	ESAST-1 1/2	ESASC-C
RFB-110	RFB-A-110	ESA-4BF-TRB-1 5/8	ESAST-1 5/8	ESASC-C
RFB-111	RFB-A-111	ESA-4BF-TRB-1 11/16	ESAST-1 11/16	ESASC-C
RFB-112	RFB-A-112	ESA-4BF-TRB-1 3/4	ESAST-1 3/4	ESASC-D
RFB-115	RFB-A-115	ESA-4BF-TRB-1 15/16	ESAST-1 15/16	ESASC-D
RFB-200	RFB-A-200	ESA-4BF-TRB-1-2	ESAST-2	ESASC-D
RFB-203	RFB-A-203	ESA-4BF-TRB-2 3/16	ESAST-2 3/16	ESASC-E
RFB-204	RFB-A-204	ESA-4BF-TRB-2 1/4	ESAST-2 1/4	ESASC-F
RFB-207	RFB-A-207	ESA-4BF-TRB-2 7/16	ESAST-2 7/16	ESASC-F
RFB-208	RFB-A-208	ESA-4BF-TRB-2 1/2	ESAST-2 1/2	ESASC-F
RFB-211	RFB-A-211	ESA-4BF-TRB-2 11/16	ESAST-2 11/16	ESASC-G
RFB-212	RFB-A-212	ESA-4BF-TRB-2 3/4	ESAST-2 3/4	ESASC-G
RFB-215	RFB-A-215	ESA-4BF-TRB-2 15/16	ESAST-2 15/16	ESASC-G
RFB-300	RFB-A-300	ESA-4BF-TRB-3	ESAST-3	ESASC-G
RFB-303	RFB-A-303	ESA-4BF-TRB-3 3/16	ESAST-3 3/16	ESASC-H
RFB-307	RFB-A-307	ESA-4BF-TRB-3 7/16	ESAST-3 7/16	ESASC-H
RFB-308	RFB-A-308	ESA-4BF-TRB-3 1/2	ESAST-3 1/2	ESASC-H
RFB-315	RFB-A-315	ESA-4BF-TRB-3 15/16	ESAST-3 15/16	ESASC-I
RFB-400	RFB-A-400	ESA-4BF-TRB-4	ESAST-4	ESASC-I

\*Available in expansion and non-expansion type bearings  
Note: SealMaster single collar has shorter length thru-bore than the Timken double collar.

# CALL ON TIMKEN

For your nearest Timken sales representative,  
visit [www.timken.com](http://www.timken.com).

# TIMKEN

The Timken team applies their know-how to improve the reliability and performance of machinery in diverse markets worldwide. The company designs, makes and markets high-performance mechanical components, including bearings, gears, belts, chain and related mechanical power transmission products and services.

[www.timken.com](http://www.timken.com)

Stronger. Commitment. Stronger. Value. Stronger. Worldwide. Stronger. Together. Stronger. By Design.